

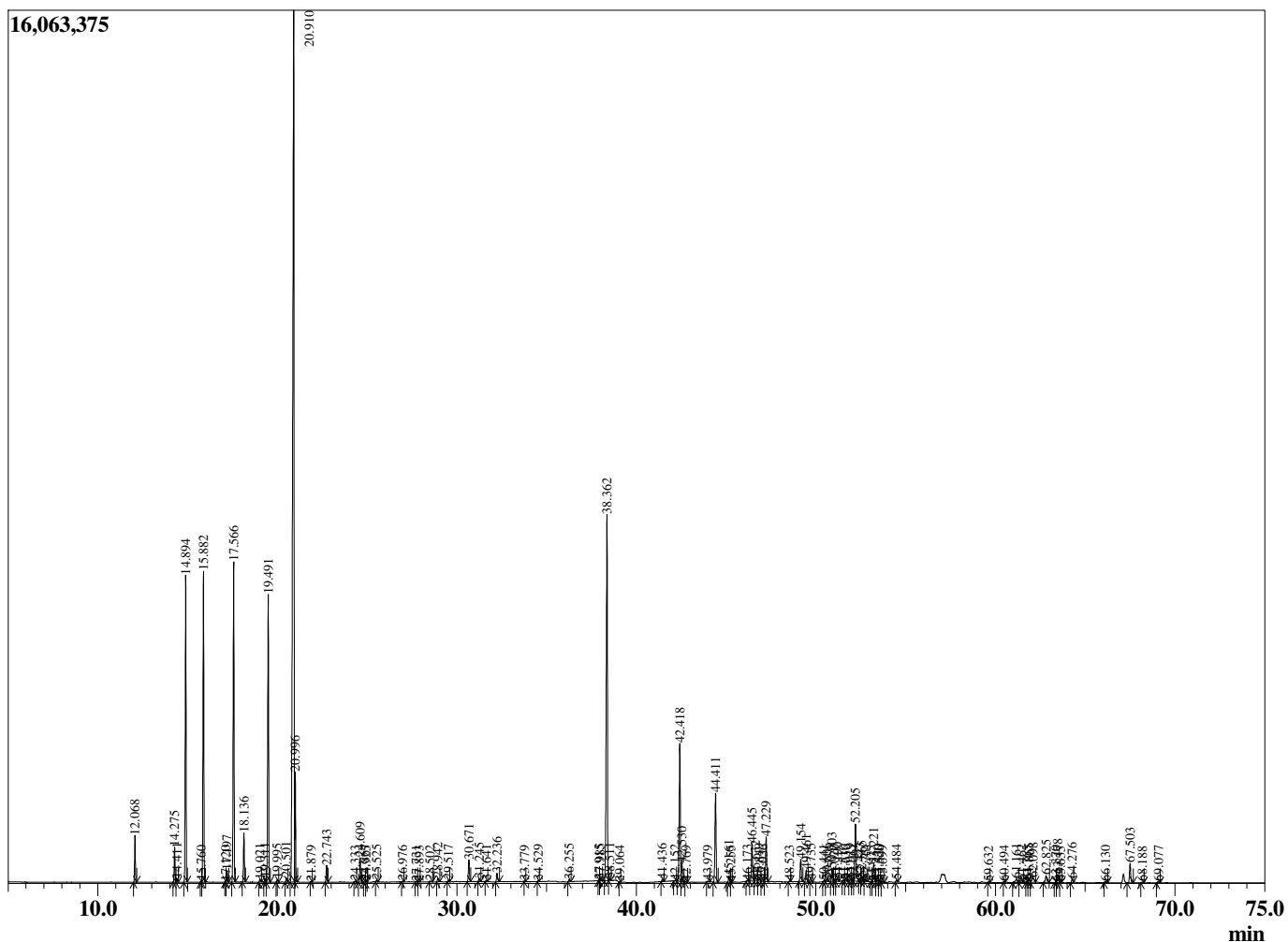
Sample Information

Sample Type : Essential Oil
 Sample Name : Abies alba

Fir Silver Needle
 Lot# ASZ15-AC
 Country: Austria



Chromatogram Abies alba



R.Time	Name	Area%
12.068	Santene	0.95
14.275	Tricyclene	0.78
14.411	alpha-Thujene	0.07
14.894	alpha-Pinene	6.98
15.760	alpha-Fenchene	0.02
15.882	Camphene	7.28
17.120	Unidentified	0.02
17.197	Sabinene	0.27
17.566	beta-Pinene	7.93
18.136	Myrcene	1.16
19.021	Octanal	0.07
19.311	alpha-Phellandrene	0.09
19.491	delta-3-Carene	7.29
19.995	alpha-Terpinene	0.07
20.501	para-Cymene	0.12
20.910	Limonene	32.60
20.996	beta-Phellandrene	2.26
21.879	(E)-beta-Ocimene	0.01
22.743	gamma-Terpinene	0.42
24.333	Isoterpinolene	0.03
24.609	Terpinolene	0.65
24.867	Fenchone	0.04
24.925	Dehydro-para-cymene	0.02
25.525	Linalool	0.05
26.976	alpha-Fenchol	0.02
27.731	4-Acetyl-1-methylcyclohexene	0.02
27.893	cis-Limonene oxide	0.01
28.502	trans-Pinocarveol	0.03
28.942	Camphor	0.10
29.517	trans-beta-Terpineol	0.04
30.671	Borneol	0.59
31.245	Terpinen-4-ol	0.09
31.641	para-Cymen-8-ol	0.03
32.236	alpha-Terpineol	0.27
33.779	alpha-Fenchyl acetate	0.02
34.529	Thymol methyl ether	0.02
36.255	Piperitone	0.06
37.915	Unidentified	0.01
37.985	Unidentified	0.05
38.362	Bornyl acetate	11.71
38.511	Isobornyl acetate	0.04
39.064	4-Terpinyl acetate	0.01
41.436	beta-Terpinyl acetate	0.06
42.152	Eugenol	0.02
42.418	alpha-Terpinyl acetate	4.11
42.530	gamma-Terpinyl acetate	0.52
42.769	alpha-Longipinene	0.03
43.979	Isolatedene	0.03
44.411	alpha-Copaene	2.73
45.161	beta-Cubebene	0.19
45.255	Unidentified	0.01
46.173	alpha-Gurjunene	0.02
46.445	Dodecanal	1.13
46.632	Junipene	0.20
46.849	Unidentified	0.10
47.036	cis-beta-Caryophyllene	0.06

R.Time	Name	Area%
47.229	trans-beta-Caryophyllene	1.33
48.523	E-Vestitenone	0.02
49.154	alpha-Himachalene	0.69
49.461	alpha-Humulene	0.37
49.735	Alloaromadendrene	0.06
50.441	Unidentified	0.03
50.606	trans-Cadina-1(6),4-diene	0.07
50.903	gamma-Himachalene	0.41
51.020	Germacrene D	0.03
51.190	11-alpha-H-Himachala-1,4-diene	0.10
51.510	Unidentified	0.03
51.636	Unidentified	0.04
51.919	Bicyclogermacrene	0.06
52.061	alpha-Murolene	0.05
52.205	beta-Himachalene	2.05
52.443	(Z)-alpha-Bisabolene	0.05
52.565	beta-Bisabolene	0.12
52.761	Unidentified	0.05
53.075	Unidentified	0.01
53.221	delta-Cadinene	0.57
53.430	trans-Calamene	0.06
53.520	Zonarene	0.04
53.699	Unidentified	0.05
54.484	(E)-gamma-Bisabolene	0.05
59.632	1-epi-Cubenol	0.01
60.494	Unidentified	0.02
61.161	beta-Himachalol	0.16
61.462	Ar-tumerone	0.08
61.765	Deodarone isomer	0.03
61.865	(Z)-gamma-Atlantone	0.10
62.098	Unidentified	0.24
62.825	allo-Himachalol	0.28
63.370	Unidentified	0.03
63.478	Deodarone isomer	0.28
63.635	Unidentified	0.02
64.276	(Z)-alpha-Atlantone	0.11
66.130	Khusimol	0.05
67.503	(E)-alpha-Atlantone	0.62
68.188	trans-Isovalencenol	0.03
69.077	Nootkatone	0.04
		100.00